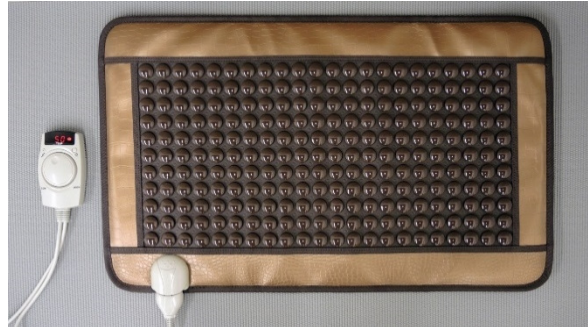




06.02.15

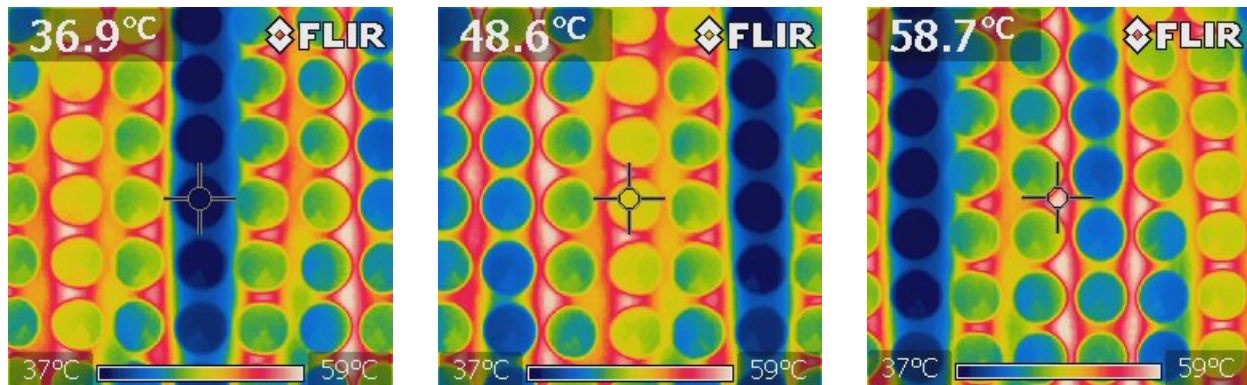
HealthyLine.com
R.D.S. Medical, P.C.
7510-4th Ave, Ste. 5
Brooklyn, NY 11209

360° Test Labs has been retained to perform functional testing of a supplied and pictured HealthyLine Therapy Mat; a 19" x 31" mat inset with 1" diameter discs, understood to be tourmaline, arrayed in a 11 x 22 grid of covering an area of approximately 12.5" x 25". Included was a controller, approximately 3" x 5" x 1" with a power button, temperature setting dial, a two digit LED display and a metal "EMF" contact.



HealthyLine Therapy Mat and Controller

In testing concluding 06/01/15, 360° Test Labs confirmed heating operation, increased negative ion presence (an increase over ambient measurements by as much as 2000+ ions/cm³, with readings between 500 and 1000 ions/cm³ most common when the mat is energized and temperature stable), and infrared output (between 5-14µm, far infrared) for the tested heating mat. The process and findings from that testing have been documented in a 3-page deliverable published 06/02/15 by our firm.



Thermal image of heated stones and mat: Mat temperatures ranged from ~ 37°C to 58°C at the highest setting (consumes ~100 Watts at that setting).

Respectfully,

R Slovenko

Richard Slovenko, Facility Manager